



Niagara 12', 3/8" Hydraulic Shear With 36" Front Operated Power Back Gauge

Pangborn Roto Blast Model ES1461, Capacity: 16" X 72"

Verson Press Brake Model 2062 6', 45 Ton

HTC 200 Ton 12' Press Brake 36" FOMBG

Uesco 7.5 Ton Crane (1 Of 2 Available)

10 Ton 60' Overhead Crane (1 of 10 Cranes)

5 Ton Overhead Crane (1 of 6 Available)

Genie GS-2032 Lift 26 Foot 32" Width

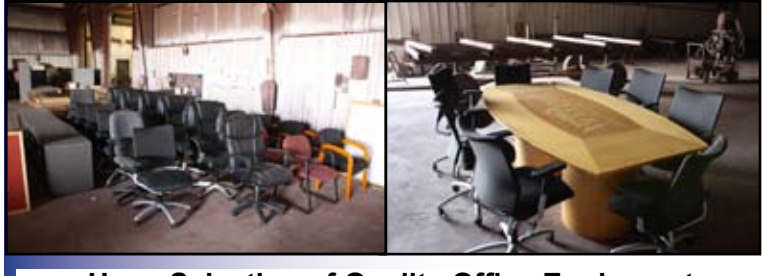
Speedaire Air Compressor 15HP 100 gal Reserve Tank



20 Ton Hydraulic Press Assorted Clamps



Pirahna 120 Ton Punch Edwards 75 Ton Ironworker



Huge Selection of Quality Office Equipment Office Equipment Sells Tuesday, December 7th

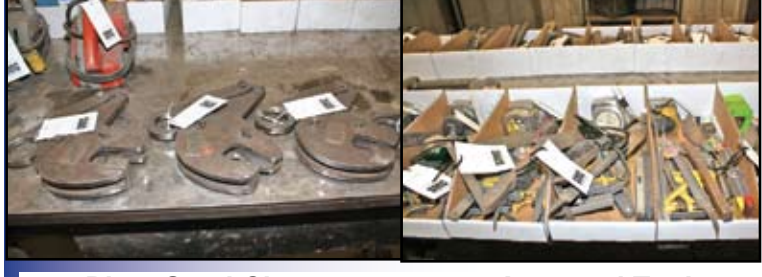


Plate Steel Clamps Assorted Tools



Trennjaeger Cold Cut Saw With 10" Blade, Model: VC260



Hem Saw Vertical Saw Model V100-LM3, 1-1/2" Blade, Built-in Coolant Capacity: 18" X 22"



Hem Saw Vertical Saw Model: V100LA-2 Capacity 18" X 22"



Hemsaw Automatic Saw: 1200A, 24" Stroke Capacity 16" Round



Hemsaw DC160LA Capacity 25" X 30"



Wysong Mechanical Shear 10" - 10 Gauge



Layout I-Beam Sawhorses 36" x 10"



Large Assortment Of Milwaukee 4" And 9" Grinders Thermal Dynamics 7XR Plasma Cutter, 70 amp



Bridgeport Mill Metal Muncher Ironworker



Lincoln CV-305 Welder With LF-72 Wire Feeder And Bernard Jib Boom (14 Available)



Large Assortment Of Welders



Over \$200,000 Worth Of Structural Steel

ONLINE AUCTION ONLY www.smcauctions.net

CNC Beam And Angle Equipment

Ficp Model: 1101ZB CNC Beam & Drilling Line, Infeed Conveyors (5) 5', (3) 3'. Outfeed Powered Conveyor: (3) 5', (1) 4', (2) 3'. Maximum Thickness - 3.93", Maximum Length 40', Maximum Positioning Weight 11,880 lbs., 6 Position Tool Changer
Ficp A152 3 Axes CNC Angle Line 2003
 6" X 6" X 1/2" Angle Capacity
 Maximum Punching Capacity - 80 Tons, Maximum Shearing Capacity - 200 Tons
Controlled Automation 3 Press Beam-Punch Line With Hemsaw Horizontal Bandsaw, **Beam/Punch Line:** 36" X 1" Beam Capacity 3 - 100 Ton Presses; Features: Web Unit, Top Flange Unit, Hydraulic Power Unit, Conveyors: (5) 16' X 60" Chain Driven Infeed, (4) 16' X 50" Chain Driven Outfeed
Hemsaw Model H160A-DC: 1-1/2" Blade, 25" H X 30"W Capacity, 15HP Drive System, 5HP Hydraulic System. Features: Blade Enhancer, Cut Watcher, Auto Chip Auger, 54" Bar Feed.
 (These two items can be married together to form a beam line)

Press Brakes Hydraulic / Mechanical

Cincinnati #9 Autocycle Mechanical Press Brake; Capacity - 225 Tons, Overall Bed Length - 16', Distance Between Housings - 14' 6", Stroke - 3", Die Space - 12", Throat Depth - 8"
HTC 200 Ton 12' Hydraulic Press Brake With Two Front Arm Supports, 36" Front Operated Powered Back Gauge.
Verson Press Brake Model 2062, 45 Ton Overall Bed Length 6.5', Distance Between Housings 5'2", Shut Height 7.5', 2.5" Stroke. With Palm Buttons, Foot Pedal, Sectional Ram Clamps
Press Brake Tooling Assorted Lots

Shears Hydraulic / Mechanical

Niagara 1F-12-3/8, 12' - 3/8" Hydraulic Shear 36" Front Operated Power Back Gauge, 10' Squaring Arm And 2 Front Support Arms
Wysong 1010RD, 10' - 10 Gauge Mechanical Shear, 36" FOMBG, 8' Squaring Arm And 2 Front Support Arms, Foot Treadle

Saws Vertical / Horizontal

Hemsaw Model H160A-DC: 1-1/2" Blade, 25" H X 30"W Capacity, 15HP Drive System, 5HP Hydraulic System. Features: Blade Enhancer, Cut Watcher, Auto Chip Auger, 54" Bar Feed
Hem Saw Horizontal Automatic Saw Model 1200A With 3 Vices, 1 1/2" Blade, 4' Front Table, 24" Stroke, Capacity: 13" X 16", Max. Table Load - 7,000 lbs.
Hem Saw Vertical Saw Model V100-LM3 With Two Vices, Blade 1-1/2", Coolant System Capacity: 18" X 22"
Hem Saw Vertical Automatic Saw Model: V100LA-2 A/T With 2 Table Vices, 1-1/2" Blade, 24" Automatic Feed, Saw Capacity 18" X 22",
Eisele Cold Cut Saw With 12" Blade, Model: VMS LII, 220 Volt, 3 Phase. Machine No. 2158
Trennjaeger Cold Cut Saw With 10" Blade, Model: VC260

Cranes

32 Ton Kone Double Girder Overhead Crane
 31' Span, Remote Controls
10 Ton 60' Overhead Crane
7.5 Ton 57' Top Running Bridge Crane With Spacemaster II Hoist
7.5 Ton Top Running, Double Girder, R&M Hoist
5 Ton 37' Top Running Beam Crane With Electric Under Hung Hoist (4 Available)

5 Ton Top Running Uesco Bridge Crane With R&M Radio Controlled Hoist And 37' Span (2 Available)
1 Ton Coffing Electric Chain Hoist With 12' Jib
1 Ton Coffing Electric Hoist (2 Available)

Ironworkers

Edwards 75 Ton Ironworker, Maximum Capacity 1-3/8" Dia. Equipped With Complete Punching Systems, Remote Foot Pedal, Fast Adjusting Hold Down Bars
Metal Muncher Model: MM61, 61 Ton Punch Height Of Throat - 14", Depth Of Throat - 9", Flats, Max. Thickness & Width - 1" X 6", 1/2" X 20", Rounds - 1-3/8", Squares - 1-1/2", Angles - 4" X 4" X 3/8"
Metal Muncher Model: MMGLA, 50 Ton Punch
Pirahna 120 Ton Punch. Throat Depth 21.5", Open Height 12-1/4", Stroke 2"

Vehicles/Trailers

2001 Chevy 2500HD Regular Cab Flatbed Truck With 5th Wheel Hitch, Trailer Brake Controller, A/C, & Running Boards
2002 Chevy Silverado 2500HD Regular Cab Truck With 188,000 Miles, Ladder Rack, 5th Wheel Hitch, Trailer Brake Controller, A/C
Ford 1-Ton With 12' Stake Bed
Mac-Lander Fifth Wheel 25' Trailer, Model: 25GDOWM
Fruehauf Flatbed 48 Trailer (8 Available)
New H&H Trailers Various Sizes

Roto Blaster

Pangborn Model: ES1461 Roto Blast With Dust Collector Max Width - 72", Max. Height - 18", Line Speed - 2 To 20 FPM, 4 Blast Wheels
Wheelabrator Model WCRC4; Width 12", Height 18" Part Opening, Passline 32", Abrasive Charge 3,200 Lbs. Hours 575, 4 Blast Wheels
Zero Blast Model M165 Tumble Blast

Punches

Wiedemann 17 Ton, Model C-1000, CNC Turret Punch Press, 17 Ton, 10 Ga. Capacity, 40" Throat, 40" X 40" Table, 20 Turret Stations, Fanuc 6mb Control, Compliment Of Punch Holders & Die Holders
Strippit Model Super 30-30, Single Punch Press, Bed Area - 72" X 48", 30" Throat, 5/8" Stroke, 165 Spm, 2 Cabinets Of Tooling
Whitney Jensen Single End Punch, Model 28, 2" Capacity (16 Ga.), 7" Throat.
Pirahna 120 Ton Punch. Throat Depth 21.5", Open Height 12-1/4", Stroke 2"
Homemade C-Frame Punch With 14" Stroke, 20 Ton Capacity
Homemade C-Frame Press, 20 Ton Capacity
90 Ton Whitney C-Frame Punch

Man Lifts / Forklifts

Genie GS-2032 Lift With 20' Platform Height And 32" Extension - 26' Working Height, 32" Width, 800 Lb Lift Capacity, A/C Outlet
Catapillar Forklift 10,000 lb T100DD, LP
JLG N-40 Electric Boom Lift, Height - 40'

Rolls

Homemade Angle Roll

Threaders

Oster Threader Model: 792LE, UNC, UMF & Spindle RM Thread. Pipe Capacity 1/8" To 2" Bolt Capacity - 1/2" To 2", Standard Die Head Quadversal Slide-In, Universal Slide-In, Quad, 300
Ridgid Threader Model: 801

Plasma Cutter

Thermal Dynamics Model PAK-7XR
 Plasma Cutter, 70 Amps PCH-52 Hand Torch
 Cutting Range - Most Materials Up To 3/4"

Welders/Torches

Air Products 250 Amp Stick Welder
Airco 500 Amp Dual Range Bumble Bee Stick Welder
Airco CV-300II Stick Welder With Bernard Boom And Arco Wire Feeder
Airco CV-300II Welder With Bernard Boom And **Airco** Wire Feeder
Airco CV300II Welding Power Source With Ahf-U1 Wire Feeder And Bernard Jib Boom
Airco CV-300III Welding Power Source With Ahf-U1 Wire Feeder And Jib Boom.
Airco CV300III Welding Power Source With LN-7 Wire Feeder
Airco Model CV-300II Welding Power Sources (2 Available) - Scrap
Ideal Arc CV-300 Welder With LN-7 Wire Feeder (2 Available)
Image Smartweld 2000 Stud Welder.
Lincoln CV-300 Welder With Bernard Jib Boom Model

Welding Positioners

Silver Stream Welding Positioners (3 Available)

Air Compressors

Speedaire 15 HP Air Compressor, 175 Psi, 49 CFM, 100 Gallon Reserve Tank
Huskey 5 HP Portable, 26 Gallon Tank.
Campbell Hosfield 5 HP Motor, 80 Gallon Tank
Sanborn 3.7 HP Motor, 60 Gallon Tank

Drills, Mills

Mittler Brothers & Sluggler Tube Drill
Milwaukee Mag Drill
Delta Rockwell Model: 15-665, 15" Drill Press Capacity 15", Swing 15", Table Size 18" X 12", Spindle Speeds (6) 450-4,700 Rpm, Spindle Travel 5", Spindle Taper #2MT
Buffalo 12" Drill Press No. 18, 3/4 hp, 3ph
Jet 15" Drill Press Model: JDP-17MF. 3/4 HP, 16-1/2" Swing, 16 Spindle Speeds
Royal 16" Drill Press

TWO DAY SALE

TUES. DEC. 7TH
Office Equipment
Beginning at 8 am CST

WED. DEC. 8TH:
Machinery, Steel & Real Estate
Beginning at 8 am CST

Auction Ends: Tuesday December 7th & December 8th, 2010
Beginning each day at 8 am CST

2300 And LN-7 Wire Feeder (14 Available)
Lincoln CV-300 Welder With LN-7 Wire Feeder (2 Available)
Miller CP-302 Arc Welder With Miller Has a 22A Wire Feeder - 35/45 Drive Rolls (3 Available)
Lincoln CV-305 Welder With LF-72 Wire Feeder And Bernard Jib Boom CV-305 LF-72 Wire Feeder, 10ft Control Cable And .035-.052in. Solid Wire Drive Roll And Guide Tube Kits, Output Range 50-400a (2 Available)
Lincoln Ideal Arc Welder With LN-7 Wire Feeder
Lincoln Welder CV-305 With LF-72 Wire Feeder Input Power - 208/230/460/3/60 Or 230/460/575/3/60, Output Range 50-400A
Miller CP-302 Welder With Model: 22A Wire Feeder
Miller CP-302 Welder With Model: 22A Wire Feeder (condition unknown)
Miller Dial Arc 250 AC/DC Stick Welder - Welding Amperage Ranges: AC - 35 - 300 AMPS, DC - 35 - 265 Amps
Miller Ideal Arc 250 AC/DC Stick Welder Rated Output - 225 Amps A/C, 265 Amps D/C
Miller Stick Welder
Ultra Arc Stud Welder Model: UA-1800.
Airco DC Welder, Model DIP-COR 300 Amp, Mounted On Cart
Miller CV/DC Welder, Model Millermatic 200, 200 Amp, Mounted On Cart (3 Available)
Sciaky Spot Welder 100 KVA, Model PMC02ST-100-39 Type 6W12, Water Cooled, Foot Switch
Cutting Torches (approx. 30)
 And Other Assorted Equipment

Western 3' Arm Radial Drill
Summit Drill, Model 59-R, Drilling Capacity In Mild Steel - 1-3/4", Spindle To Column - 15-1/2", Max. Diameter Of Work Piece - 28-1/2", Main Motor - 4 HP
Bridgeport Series I Mill, 9" x 42" Table

Grinders Pedestal / Surface

United States Electric Model 1 HP Pedestal Grinder
Baldor Model: LZ853N 1 HP, Single Phase, Grinder With 9" Grinding Wheels.
Dayton 1 HP Grinder With 9" Wheels (2 avail.)
Milwaukee Large Assortment Of Hand Grinders Including 4" And 9"
Blohm Simplex Surface Grinder Model 7, 12" X 28" Electromagnetic Chuck W/Controls

Air Cleaners/Fume Collectors

Torrit Portable Fume Collector
Trion Hanging Air Cleaners (13 Available)

Roller Conveyors And Sawhorses

A Large Assortment Of Roller Conveyors Of

Varying Sizes And Many Metal Sawhorses Of Varying Capacities
I-Beam Sawhorses 36" High x 10' Long, 10" I-Beam

Office Furniture And Equipment

A Large Assortment Of Quality Office Furniture Including Executive Chairs, Board Room Tables, Drafting Tables, File Cabinets, Dell Computers And Much, Much More!

Lathes

Clausing Model 6339 Lathe 12" X 36"
Super Tec Lathe Model STL-59, 10" X 22" With Grinding Wheel, Tools, Diamond Tool, Coolant Pumping Equipment, Balancing Arbor

Tube And Pipe Bender

Diaco #6 Hydraulic Pipe And Tube Bender 5/8" Steel Bar, 1/4" Steel Tubing Forward/Reverse, Foot Switch, Pallet Of Tooling

Sanders

Oliver 6" Belt Sander, Horizontal Disc With Large Table
Hammond Double End 4" Belt Sander

Tools And Accessories

A Large Quantity Of Clamps, Welding Helmets, Hand Tools, Miscellaneous Parts And Much Much More!

Structural Steel, Fasteners And Other Related Equipment

W8 To W16 I-Beams Lengths 12' To 60'
 2" x 2" To 8" x 8" Tubing 6' To 21'
 We Have 1 1/2" X 1 1/2" To 6" x 6" Angle Up To 1/2"
 Flats 16ga/ 5' x 12' Sheet Steel Up To 7' X 12'
 1/2" AR500 Steel
 100's Of Pieces Of Tubing
 New Misc Steel Too Much To List
 Over \$200,000 Worth Of Structural Steel

Tone Electric Shear Wrench Model: S-110EZ

Makita Electric Shear Wrench Model: 6922NB
Renfro A Large Assortment Of Sheet Clamps

This is a Large Sale with Too Many Items To Mention Here. Please Go To Our Website For A Complete Listing!

A 12% buyer's premium applies to this auction

*Specifications Subject To Inspection Verification

SMC Auction Services
2705 Northridge Pkwy
Ames, IA 50010



FINDERS FEES!

Do you have a plant or know of a plant that is closing, relocating or downsizing (individual pieces or entire plants)? All inquiries will be kept strictly confidential. Please contact us today for further information.

Rigging and Trucking Available!

We can arrange to have your item loaded onto your truck or we can arrange to have the item shipped directly to your location.

ONLINE AUCTION ONLY www.smcauctions.net

RAMARK STEEL

Real Estate will be sold at noon on December 8th

375 State Street • Dexter, IA 50070

Brief Legal Description:

Parcel "B" of the Southeast Quarter of the Southwest Quarter (SE 1/4 SW 1/4) of Section Thirty (30), Township Seventy-eight (78) North, Range Twenty-nine (29) West of the 5th P.M., Dexter, Dallas County, Iowa, subject to easements and restrictions of record.

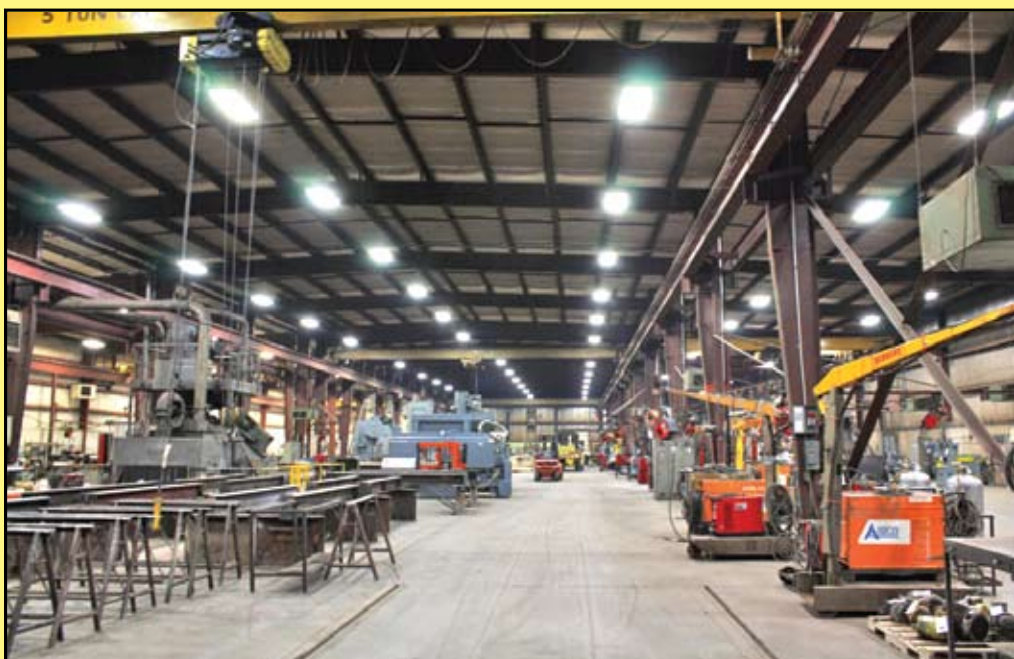
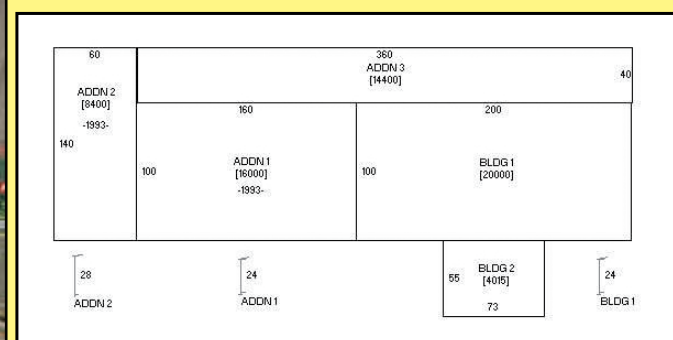
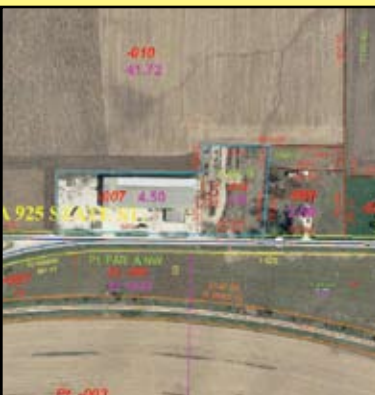
- *Subject to seller's confirmation
- *Buyers premium does not apply to the sale of the real estate

Site Area: 7.4 acres m/l

Zoning: M-2 Heavy Industrial

Improvements:

62,815 sf of gross building area including 4,015 sf of office space. The original structure was built in 1980 with additions made in 1993 and 2005. The manufacturing area is heated and the office is heated and cooled.



ONLINE AUCTION ONLY
www.smcauctions.net
TWO DAY SALE

TUES. DEC. 7TH
Office Equipment
Beginning at 9 am CST

WED. DEC. 8TH
Machinery, Steel & Real Estate
Beginning at 8 am CST

Auction Ends: Tuesday December 7th & December 8th, 2010
Beginning each day at 8 am CST

Preview dates: Friday, December 3, 9 am. - 3 pm • Saturday, December 4, 9 am. - Noon
Monday, December 6, 9 am. - 3 pm
Removal Dates: Friday, December 9-10: 8:30 am - 5 pm
Monday-Wednesday, December 13-15: 8:30 am. - 5 pm

Highlights: Real Estate, Ficep Beam Drill and Cut Line, Ficep CNC Angle Line, Press Brakes, Shears, Saws, Welders, Overhead Cranes, Trucks, Trailers, Structural Steel and Much More! • **Sale by order of creditor**

SALE TERMS: (A 12% buyer's premium applies to this auction.) *Specifications Subject To Inspection Verification SMC, LLC makes every attempt to accurately describe each item; however, it is possible that a mistake may occur. It is for this reason that all bidders are encouraged to take the time to thoroughly inspect all items prior to bidding. All items are sold "AS IS" with no warranties, express or implied. All purchases must be paid for the day of removal. Payment can be cash, traveler's check, cashier's check, wire transfer, company or personal check. All personal or company checks over \$1,000 must be accompanied by a bank letter of guarantee.

Rigging/Removal: Once an item is sold, the winning bidder is responsible for its removal. Removal may begin immediately after the auction. The buyer is responsible for all costs of rigging and removal. Items considered to be abandoned unless other arrangements are made. Sold items requiring rigging may be removed by any insured rigger that has a liability insurance policy of at least 2 million dollars on file with our office. Items requiring rigging may not be removed by an uninsured or underinsured buyer or rigger.

Real Estate will be sold at noon on December 8th
Real Estate Transfer being conducted by G. Mark Rice
Whitfield & Eddy PLC
Des Moines, IA 50304-4195
Location: Ramark Steel
375 State Street • Dexter, Iowa 50070
Directions: From Interstate 80: Take Exit 97 off of Interstate 80 and proceed north on County Hwy P48. Follow County Hwy P48 north to State Highway 925 and turn west (left) Ramark Steel will be on the north side of the highway.

SMC
AUCTIONS • LIQUIDATIONS • APPRAISALS
Email: auctions@smccompany.com
Web page: www.smcauctions.net
2705 Northridge Pkwy
Ames IA 50010
Phone: (866) 961-3211
Fax: (877) 268-3165

ONLINE AUCTION ONLY www.smcauctions.net

*Specifications Subject To Inspection Verification



Ficep CNC Angle Line Model: A152, Year 2003. MAXIMUM PUNCHING CAPACITY - TONS; MAXIMUM SHEARING CAPACITY - 200 TONS; CNC AXES -3



Ficep Beam & Drilling Line Model: 1101ZB, Year: 2006 with 40" wide powered conveyors including (4) 8' conveyors & (5) 5' conveyors and (2) 3' Infeed Conveyors max. thickness that can be drilled - 100mm, max. length 12,000 mm; max. positioning weight 5,400 kg



2002 Chevy Silverado 2500HD Regular Cab Truck with 188,000 miles, ladder rack, 5th wheel hitch, trailer brake controller, A/C



Mac-Lander Fifth Wheel 25' Trailer, Model: 25GDOWM



Fruehauf Flatbed 48 Trailer (8 available)



2001 Chevy 2500HD Regular Cab Flatbed Truck with 5th wheel hitch, trailer brake controller, A/C, and running boards



48 foot semi trailer